

**DATE:** January 7, 2026

**TO:** Emily Brickman, P.G., *Senior Project Manager – Geologist, EnSafe*

**FROM:** Caleb Gourley, *Senior Staff Scientist, Harbor*

**RE:** Bi-weekly Site Inspection  
NABORS Landfill  
Mountain Home, AR  
*Harbor Project No: L8247885*

---

Harbor conducted the bi-weekly site visit at the NABORS landfill in Mountain Home, Arkansas on January 2, 2026, to assess the general condition of the landfill and the leachate collection system (LCS). The LCS was last fully repaired by Advanced Fluid Technologies (AFT) in October and November of 2022; however, within a few weeks of these repairs, the LCS began malfunctioning. By March 2023, most of the LCS points were malfunctioning. A quote was then requested and received from AFT to repair the system again. No authorization for the subsequent repairs was provided prior to the expiration of Harbor's contract with DEQ in June 2023.

Landmarc Environmental (Landmarc), a company specializing in LCS installation and service, conducted a full assessment of the LCS on December 3-4, 2024. A report summarizing these activities was submitted on January 20, 2025. Harbor discontinued site visits in February 2025 until DEQ approved a new budget for activities occurring at NABORS. The budget was approved on April 3, 2025, and site visits will continue until 2026.

EnSafe submitted a Scope of Services and Fee Estimate (Revision 1) to the Arkansas Department of Energy and Environment Division of Environmental Quality (DEQ) Office of Land Resources on February 28, 2025, which included proposals from Harbor and Landmarc to complete repairs to the LCS. On July 10, 2025, the DEQ approved EnSafe's Scope of Services and Fee Estimate for LCS repairs, which were conducted on September 2-5, 2025. The LCS system was partially repaired, which included installation of 30-amp power disconnects and new PD6000 controllers. Harbor received a report from Landmarc on October 13, 2025, which was included with a report summarizing repairs prepared by Harbor and submitted on October 24, 2025.

Findings and observations from the current landfill inspection are summarized below:

- When Harbor arrived on-site, the main entrance gate was in a fully opened position, and it appeared as though someone had tampered with one of the locks on the gate. Once inside, Harbor personnel discovered that general household refuse had been dumped near the leachate tank containment area (see photographs 1 – 2).
  - Vertical leachate collection sump (VLCS)-1 was not functioning correctly, and the sump was observed at capacity and overflowing (see photographs 3 – 4).
  - VLCS-2 appeared to be functioning correctly and was observed at 1/2 capacity.
-

- The leachate tank battery level was 86.4 inches.
- Minimal stormwater was observed in the leachate tank containment. As such, no stormwater was released from the containment.
- LCS-1 displayed a leachate level of 65.1 inches. The sump did not activate in “hand” or “auto” and appears to not be functioning correctly.
- LCS-2 displayed a leachate level of 16.4 inches. The station appeared to be operating in both “hand” and “auto” modes.
- LCS-3 displayed a leachate level of 31.1 inches. The station appeared to be operating; however, the “hand” and “auto” modes did not affect the sump, and the leachate level did not change over time.
- LCS-4 displayed a leachate level of 19.3 inches. The station appeared to be operating in both “hand” and “auto” modes.
- LCS-5 displayed a leachate level of 565.2 inches. Landmarc stated that the sump pump is more than likely faulty, causing voltage issues within the VFD. The station is not functioning correctly and will need additional repairs.
- LCS-6 displayed a leachate level of 651.0 inches. The station did not appear to be functioning correctly.
- LCS-7, LCS-8, and LCS-9 remain non-operational. Landmarc has submitted a proposal to complete repairs.
- An erosional washout is present along the road between LCS-4 and LCS-5.
- Two damaged pressure relief vents (PRV) were observed on the west side of Area 1-2, between LCS-1 and LCS-2. The damage is located near coordinates 36.46144, -92.45128.
- Damaged closure turf was observed on the north side of Area 1-2 at coordinates 36.46181, -92.45045. The damage is approximately 30 feet long by 3 feet wide. The damage was first observed on July 2, 2025.
- Damaged closure turf was observed on the east side of Area 1-3, above LCS-7. The damage is approximately 100 feet long by 9 feet wide. The closure turf tear was first observed on June 17, 2025.

Attachment A is a map showing the LCS points. Photographs are included in Attachment B. Copies of the field notes and the LCS status form are included in Attachment C.

The LCS functionality has improved significantly since Landmarc made their recent repairs. 417 Services began hauling leachate on July 2, 2024. From July 2, 2024, through February 23, 2025, 226 loads of leachate (866,700 gallons) was hauled to the City of Springfield, Missouri wastewater treatment plant under wastewater contribution permit #593.

No leachate was hauled between February 24, 2025, and April 10, 2025. 417 Services resumed hauling leachate on April 11, 2025. As of October 17, 2025, 180 loads of leachate (693,000 gallons)

have been hauled to the City of Springfield for disposal. Leachate hauling has been paused since October 17, 2025, until more funds become available.

**Attachments:**

*Attachment A – Site Map*

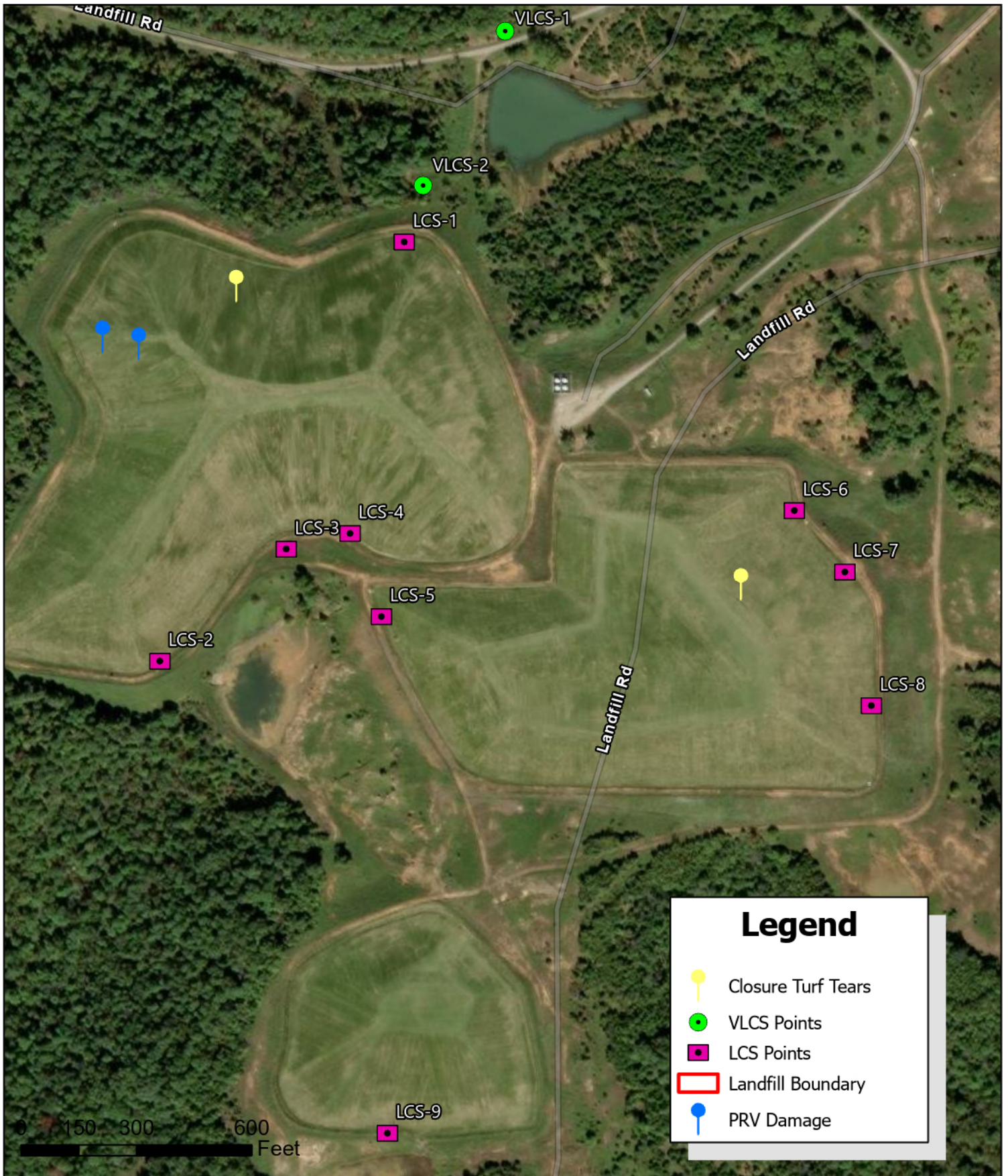
*Attachment B – Site Photographs*

*Attachment C – Field Notes and Leachate Collection System Status Form*

**Attachment A**

**Site Map**

---



### Legend

- Closure Turf Tears
- VLCS Points
- LCS Points
- Landfill Boundary
- PRV Damage

**Harbor**  
 A Terracon Company  
 5800 Evergreen Drive  
 Little Rock, AR 72205  
 P: 501.663.8800  
 www.HarborEnv.com

**Client:**  
**ENSAFE**



**Site Location Map**  
 NABORS Landfill  
 Three Brothers, Baxter County, AR  
 Date: 10/9/2025  
 Drawn by: CG  
 Checked by: TH  
 Revision No: 0

**Attachment B**  
**Site Photographs**

---



**Photograph 1:** View of discarded refuse near leachate tank containment.



**Photograph 2:** View of discarded refuse near leachate tank containment.



**Photograph 3:** View of VLCS-1 overflowing.



**Photograph 4:** View of VLCS-1 at capacity.

## **Attachment C**

### **Field Notes and Leachate Collection System Status Inspection Form**

---

Nabors Landfill

1/2/25

Leachate Management

weather: 40's, overcast, light rain

957: C. Gowby on-site

1000: Arrive at VLCS-2

1002: Arrive at VLCS-1

1005: Arrive at leachate tank battery

- tank level @ 86.4"

- min. sw in cont.

- someone has dumped trash  
near containment

1015: Arrive at LCS-1

1018: Arrive at LCS-2

1020: Arrive at LCS-3

1022: Arrive at LCS-4

1027: Arrive at LCS-5

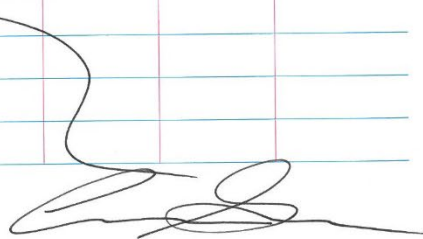
1032: Arrive at LCS-9

1037: Arrive at LCS-8

1040: Arrive at LCS-7

1042: Arrive at LCS-6

1050: C. Gowby off-site





Leachate Collection System Status

Date: 1/2/25 Arrival Time: 9:57 Location: NABORS Landfill Leachate Tank Battery Level (inches): 86.4"  
 Weather Conditions: 40's, overcast, light rain

Panel Number	Display Functioning (Yes/No)	Leachate Level (inches)	Green Flashing? (Yes/No)	Amber Flashing? (Yes/No)	Red Flashing? (Yes/No)	Working in Hand? (Yes/No)	Working in Auto? (Yes/No)	VFD Operational? (Yes/No)	Comments
VLCS-1	N/A	N/A	N/A	N/A	N	N	N	N/A	Sump Capacity: <u>at capacity</u>
VLCS-2	N/A	N/A	N/A	N/A	N	Y	Y	N/A	Sump Capacity: <u>1/2 capacity</u>
LCS-1	Y	<u>65.1"</u>	N	N	N	N	N	—	<u>station not operational</u>
LCS-2	Y	<u>16.4"</u>	N	N	N	Y	Y	✓	<u>Station ok</u>
LCS-3	Y	<u>31.1"</u>	N	N	N	Y	Y	✓	<u>" "</u>
LCS-4	Y	<u>19.3"</u>	N	N	N	Y	Y	✓	<u>" "</u>
LCS-5	Y	<u>565.2"</u>	N	N	N	N	N	—	<u>station not operational</u>
LCS-6	Y	<u>651.0"</u>	N	N	N	N	N	—	<u>" "</u>
LCS-7	N	—	—	—	—	—	—	—	<u>" "</u>
LCS-8	N	—	—	—	—	—	—	—	<u>" "</u>
LCS-9	N	—	—	—	—	—	—	—	<u>" "</u>
<b>General Comments:</b>									

End of Report

---